

Yardley Photographic Society

B.P.E Exhibition

Saturday 8th of November 2014



**Castle Bromwich Methodist Church
School Lane
Shard End
Birmingham B34 6SJ**

Index

Foreword	Page 4
Selectors Comments	Page 5
Monochrome Prints	Page 7
Colour Prints	Page 11
Nature Prints	Page 15
General Projected Digital	Page 18
Nature Projected Digital	Page 25
Panel of Four Prints	Page 30
British Photographic Exhibitions	Page 33
Yardley Photographic Society	Page 34

Cover Picture is “ Mother Love Baby Macaque Indonesia “

By Sue O’Connell DPAGB ARPS EFIAP BSE

FOREWORD

Welcome to our 3rd BPE Exhibition.

We hope that you enjoy the presentation of images, prints and digital, that have been selected from all the entries presented.

Thank you to the authors who have supported this year's BPE Exhibition and for providing our judges with excellent images for selection . It is pleasing to see some new names amongst the awards.

We are extremely pleased with the amount of entries that we have received, and also of the variety and quality of subject matter.

Our selectors this year :-

Panels, Nature Prints and Nature Digital Projected Images :-

Don Byatt ARPS MPAGB EFIAP BPE5*

Barbara Lawton FRPS DPAGB

Peter Preece Dip.A.D (Hons)

Monochrome Prints , Colour Prints and General Digital Projected Images :-

Don Byatt ARPS , MPAGB , EFIAP , BPE5*

Anne Sutcliffe ARPS , FRPS

Peter Rees FRPS , EFIAP/p , MPAGB , BPE5*

Thank you to our Judges for their time and patience during the judging weekend, we enjoyed their company.

Congratulations to those who had work accepted and the award winners. If you were not successful this year, we wish you every success in future Exhibitions .

On a personal note I would like to say thank you to the Yardley team, for their hard work, dedication and support in making this BPE Exhibition possible. Thanks go to our members partners and relatives for helping with some of the tasks involved when putting on an Exhibition. A big thankyou to Angie Jackson and Carol Coffey for the excellent food they put on for the two judging days .

Once again thank you all.

Tom Mace BA ,
Exhibition Secretary

Comments from the Selectors

The standard of entries for this year's exhibition was generally high, and quite exceptional in the Nature Prints and PDI sections. This gave the judges a difficult but pleasant task selecting the award winners. Some fine examples of insect life competed with birds and mammals for the top honours. In the Colour and Mono Print sections we were treated to some exciting sports and action images, as well as some fine portraits. A similar story in the Open PDI section and the creative images were pleasing, without too many resorting to gimmicky techniques. In conclusion I feel the images in all sections combine to give a well balanced exhibition.

On behalf of my wife and myself I would like to thank the organisers for their hospitality over the two days of judging. We were made to feel very welcome and we certainly enjoyed the lunches on both days!

Don Byatt ARPS , MPAGB , EFIAP , BPE5*

First, I would like to thank Yardley Photographic Society for the invitation to be one of the selectors for the exhibition. I would also like to take this opportunity to thank the organising committee for their warm welcome and hospitality as well as all their hard work in organising the Exhibition.

The Nature Section of the exhibition in general was of a very high standard, with some stunning images in both the Print and PDI sections. Although there was a reasonable diversity of subject matter submitted, there was certainly a lack of good botanical subjects in both sections.

The images submitted in both the Panel and into the Yardley, members' sections were imaginative and creative and again demonstrated on the whole a high level of skill.

Congratulations to all the award winners. I'm sure that YPS will have an interesting and well balanced exhibition.

Barbara Lawton FRPS , DPAGB

There was a large entry of bird photography as usual, but the botanical entry was slightly disappointing. Again due to the advances in digital technology the quality in some of the images was high which made the final selections of the medal winners more difficult.

The selected images reflected good composition (with creatures shown in their natural environment), good action shots and some images taken from unusual angles which usually produce more exciting pictures.

The Macro photography of insects was of a very high standard.

I would like to thank the members of Yardley Photographic Society for the hospitality shown on the judging day and hope that the exhibition will be successful.

Peter Preece, Dip.A.D. (Hons.)

Comments from the Selectors

“It was a pleasure to be one of the selectors for this year’s Yardley Exhibition.

There was a good cross-section of traditional and contemporary/creative work, which I feel was mainly of the standard and quality we have come to expect in BPE exhibitions. I was impressed by the standard of monochrome printing, which reflects the improvement in both hardware and software available to the b&w enthusiast. Many of the colour prints and pdi’s were also of a high standard, although some were let down by imperfect technique and “finishing”. For an image to catch a judge’s eye and gain an extra mark or two, it needs to not only have perfect quality, excellent composition/arrangement of the key elements, good lighting, contrast, etc. but it also needs to convey to the judge what was in the author’s mind in taking the image and then choosing to present it in a particular way, ie. his or her personal interpretation. This may be dramatic and “punchy” or soft and dreamlike, or it may emphasise a particular aspect of the image, or it may set out to tell a story, as do many of the “constructed” images we see in exhibitions these days.

In essence, if a judge can relate to what was in the author’s mind and sees a perfectly executed and presented view of that vision, then a successful outcome is assured.

Many entrants I feel did not put enough of “themselves” into their images, or showed a lack of awareness as to how to increase that all-important ingredient – impact !

There was a good variety of subject matter and I think this will be reflected in the judges’ final selection.

The hard-working Yardley team were friendly, informal and efficient. It’s a labour of love that deserves recognition. My thanks to them for a smoothly-run day.”

Peter Rees, FRPS, EFIAP/p, MPAGB, BPE5.

Judging at Yardley was an enjoyable experience and my fellow judges and I were treated to some super images which will contribute to a super exhibition. The very best images won awards. I congratulate all those photographers who won an award for the quality and originality of their images. The monochrome print section was highly competitive. A few well composed and unusual images missed out on acceptance and in a few cases, an award because of suboptimal tonal control. The colour print section was dominated by female portraiture and there were some stunning images with excellent print quality. The remaining entries seemed to concentrate on popular subjects such as civil war re-enactments, Goth gatherings and historical events at Blist’s Hill or other 40’s weekends. Some of these images were excellent but after a while, seeing the same characters over and over again became boring, especially because the photographer had clearly not engaged with them to create a personal and unique image. Sadly, there were very few landscapes to select from or quality sports images. The DPI section was disappointing because many of the entries were poorly composed and HDR techniques were over cooked. Never the less, as in the other sections, the accepted and award winning images are a delight to view. I offer these comments to assist those who were unsuccessful. This said, to my regret, limited hanging space meant that not all the images I admired were accepted. This will be a wonderful exhibition and I congratulate the organizers for bringing it together.

Anne Sutcliffe FRPS

Monochrome Print



Gold Medal
Teenage Angst
Alison Rawson
DPAGB,ARPS,EFIAP,BPE3*

Silver Medal
Her Indoors
Gareth Jenkins
ARPS,DPAGB,AFIAP,BPE2*
ERYRI NWPA



Bronze Medal
Camargue Horses
Michael Windle ARPS
Cotswold Monochrome



HIGHLY COMMENDED

Dicks Judi LRPS BPE3 Time for an Ice Cream	STAFFORD PS
Donnelly Terry MPAGB ARPS AFIAP Quasher	ORMSKIRK & CHORLEY C.C
Giffin David BPE4 DPAGB The Production Line	BEYOND GROUP
Johnston Bob ARPS The Dark Stores of Calanais	GRANGE P.S
Price Jim DPAGB EFIAPb BPE5 Gotcha	BEYOND GROUP

COMMENDED

Couper Christine ARPS EFIAP BPE2 CPAGB Storm Surge	INDEPENDENT
Dallow Bob Gathering Storm	SMETHWICK P.S
Duckett Ralph MPAGB APAGB BPE3 EFIAP The Piano Player	BURTON-ON-TRENT P.S
Jenkins Gareth ARPS DPAGB BPE2 AFAIP Vampiress	ERYRI N.W.P.A
Toft Mauureen EFIAP/p MPAGB MPSA ABPE Ayanna	SOUTHAMPTON C.C

ACCEPTED

Ainscow Ken CPAGB BPE4 Similar View	LYTHAM ST. ANNES P.S
Bagnall Keith Singing the Blues	WYTHALL P.S
Bailey Ian LRPS Harris-Outer Hebrides Callanish Stones-Outer Hebrides	COTSWOLD MONOCHROME
Bradshaw Mike CPAGB EFIAP/b BPE3 Homeward Bound Undertaker	TETTENHALL WOOD P.C
Chapman Mike LRPS MPAGB BPE5 Sisters	SOLIHULL P.S
Cherry Richard ARPS DPAGB BPE4 EFIAP In the Shadow of Sibelius Love Is	CHELTENHAM C.C
Close Colin LRPS CPAGB BPE3 Hooded Man	BROMSGROVE P.S
Judi Dicks LRPS BPE3 Envy Commuter Time The Loss Adjuster	STAFFORD P S
Donnelly Terry MPAGB ARPS AFIAP Purple Rain Goodbye my Friend	ORMSKIRK & CHORLEY C.C
Duckett Ralph MPAGB APAGB BPE3 EFIAP The Ploughman	BURTON-ON-TRENT P.S

Edwards Mike ARPS BPE5 Contemplation	SMETHWICK P.S
Evans Roger DPAGB EFIAP ABPE Eyeballing the Serve	DAPA GROUP
Fackrell Alan Kayleigh	SMETHWICK P.S
Fryer Andy DPAGB EFIAP BPE4 Silo Steps + Shadows	SMETHWICK P.S
Gardner Nigel Snow Storm - Loch Long The Old Man of Callender	PETERBOROUGH P.S
Giffin David BPE4 DPAGB Just Walking in the Rain Room to Let	BEYOND GROUP
Gutteridge Andy EFIAP BPE3 On the Steps Charlie in Low Light	PETERBOROUGH P.S
Hunten Trevor DPAGB EFIAP BPE3 Last Light Knoydart	DROITWICH SPA P.S
Jayes Dinah ARPS MPAGB EFIAP Soft Touch In Soft Window Light Stranger in the Night Reproachful Look	SMETHWICK P.S
Jenkins Gareth ARPS DPAGB BPE2 AFIAP The Spiv	ERYRI N.N W.P.A
Johnston Bob ARPS Cloud over Avebury Down	GRANGE P.S
Kirkby Mary Zebra Spooked at Waterhole , Namibia	STRATFORD PHOTO GROUP
McKelvey Ross EFIAP MPAGB FIPF Hollie Body Sock Supple Beauty	CATCHLIGHT C.C
Moore John Tobacco Dryr Is that a Smile ?	SMETHWICK P.S
Parry Judith DPAGB Hon PAGB AFIAP Just Fredall	SMETHWICK P.S
Parry Roger ARPS Hon PAGB EFIAP DPAGB Turn From the Light Nordic Beauty Curled on the Chair	SMETHWICK P.S
Price Fred DPAGB BPE4 EFIAP Alone The Shopkeeper	BEYOND GROUP
Price Jim DPAGB EFIAP/b BPE5 Boat Graveyard Gert and Daisy	BEYOND GROUP
Prior Dick ARPS BPE4 AFIAP Lady of Caerlucurrock	STRATFORD PHOTO GROUP

Rapier Malcolm ARPS CPAGB BPE2 On One Hand	EDMONTON C.C
Rapier Marion ARPS CPAGB BPE1 On the Losing Side Curves	EDMONTON C.C
Reeve Kay FRPS DPAGB Incoming Tide	SPHINX P.C
Sellers Jon BPE4 CPAGB AFIAP Watching the Weather	WIGAN 10
Toft Maureen EFIAP/p MPAGB MPSA ABPE Rendezous	SOUTHAMPTON C.C
White John EFIAP/S BPE5 CPAGB Moto Cross Trio	TETTENHALL WOOD P.C
Windle Michael ARPS Arctic Fox Polar Bear Submission	COTSWOLD MONOCHROME

Entry Analysis

	Entered	Accepted	Accepted %
Monochrome Prints	259	69	27 %
Colour Prints	314	98	31 %
Nature Prints	155	46	30%
Total Prints	728	213	29%
General Projected	548	226	41 %
Nature Projected	342	92	27 %
Total P.D.I	890	318	36 %
Panels of 4 Prints	54	21	39 %

Colour Prints



1st Place
Mother With Child
Maureen Toft EFIAP/ MPAGB MPSA
ABPE
Southampton C C

2nd Place
Washing The Patches
Gareth Jenkins ARPS DPAGB
AFIAP BPE2*
Eryri NWPA



3rd Place
Butterfly
Judith Parry DPAGB AFIAP
HonPAGB
Smethwick P S

HIGHLY COMMENDED

Cherry Richard ARPS DPAGB BPE4 EFIAP Nude with Cartoons	CHELTENHAM C.C
Fryer Andy DPAGB EFIAP BPE4 Storm Clearing in the Glen	SMETHWICK P.S
McKelvey Ross EFIAP MPAGB FIPF Grey Hat	CATCHLIGHT C.C
Moore Adrian Dew Drops on Willows	TAMWORTH P.C
Parry Judith DPAGB Hon PAGB AFIAP Thoughts of Far Away Place	SMETHWICK P.S

COMMENDED

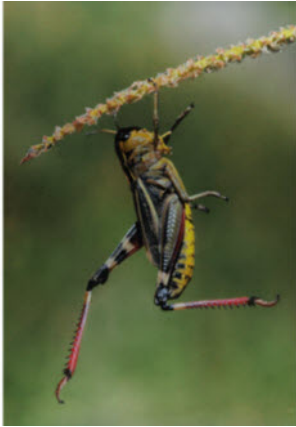
Evans Roger DPAGB EFIAP ABPE Head in the Clouds	DAPA GROUP
Johnston Bob ARPS Return from the Fields	GRANGE P.S
McHugh Trevor Morning Light	DESBOROUGH & ROTHWELL P.S
Miles Ann FRPS FBPE Therfield Heath	CAMBRIDGE C.C
Sellers Jon BPE4 CPAGB AFIAP The Undertakers	WIGAN 10

ACCEPTED

Alexander Ove Extreme Upstream Swimming Three Vices of Man	STOCKPORT P.S
Bagnall Keith End of the Day	WYTHALL P.S
Bradshaw M CPAGB EFIAP/b BPE3 Clean Bowled	TETTENHALL WOOD P.C
Chapman Mike LRPS MPAGB BPE5 The Salute	SOLIHULL P.S
Cherry Richard ARPS DPAGB BPE4 EFIAP Curves and Squares In the Kasbah	CHELTENHAM C.C
Close Colin LRPS AFIAP BPE3 Waiting	BROMSGROVE P.S
Dicks Judi LRPS BPE3 Fun in the Snow Here Come the Boys The Lady in Red Walk on By	STAFFORD PS
Donnelly Terry MPAGB ARPS AFIAP Manhattan Smooch Lewis Number 40 Passion	ORMSKIRK & CHORLEY C.C
Duckett Ralph MPAGB APAGB BPE3 EFIAP Lollipop Girl Sheriff's Office	BURTON-ON-TRENT P.S
Edwards Mike ARPS BPE5 Pontal Beach	SMETHWICK P.S

Evans Barry Morning Playtime	DUDLEY C.C
Evans Roger DPAGB EFIAP ABPE Rhyannon Jones Off Bar	DAPA GROUP
Fackrell Alan In the Mirror	SMETHWICK P.S
Fryer Alison DPAGB EFIAP/b BPE3 Porth Nanven Winter Wonderland	SMETHWICK P.S
Fryer Andy DPAGB EFIAP BPE4 Silver Birch	SMETHWICK P.S
Gardner Nigel Jet Ski No.3 Sarah the Punk Field of Conflict	PETERBOROUGH P.S
Giffin David BPE4 DPAGB A Fishy Tale My Fathers Chair The End of the Line Happy Days	BEYOND GROUP
Harding John LRPS BPE3 EFIAP Preparing Lunch	STRATFORD PHOTO GROUP
Hilton Graham LRPS BPE2 Racing Dogs	STOCKPORT P.S
Hodgkiss Roy ARPS DPAGB Lady in Red "Sally-Anne"	RUGELEY & ARMITAGE C.C
Holt John ARPS DPAGB BPE4 The Odd Couple February on the Fells Cwm-Y-Ffynnon	SMETHWICK P.S
Hunton Trevor DPAGB AFIAP BPE3 Hebridean Light Rannoch Moor Wester Ross Scotland	DROITWICH SPA P.S
Jayes Dinah ARPS DPAGB EFIAP A Strange Assignment The Trance	SMETHWICK P.S
Jenkins Gareth ARPS DPAGB BPE2 AFIAP Waiting Driver Night Stalker Lost Love	ERYRI N.W.P.A
Keel David EFIAP/s CPAGB BPE4 Mami Sato Para Long Jumper	WYTHALL P.S
Kirkby Mary Crab Seller , Borneo	STRATFORD PHOTO GROUP
Leyser Cheryl Peeping Tom	SMETHWICK P.S
Mallett Don CPAGB BPE3 Four of a Kind	SHIRLEY P.S
McKay Dave ARPS DPAGB BPE4 Early Morning Jogger	OXFORD P.S
McKelvey Ross EFIAP MPAGB FIPF Lady Chainmail Anna Orange Shawl	CATCHLIGHT C.C
Miles Ann FRPS FBPE Blue Haze Kings Cross Concourse	CAMBRIDGE C.C

Moore Adrian	TAMWORTH P.C		
We Dream That One Day			
Moore John	SMETHWICK P.S		
Under the Arches			
Fun in the Car			
Proud Man			
Parry Judith DPAGB Hon PAGBAFIAP	SMETHWICK P.S		
Gentle Mood			
Celestial Light			
Parry Roger ARPS Hon PAGB DPAGB EFRIAP	SMETHWICK P.S		
Beneath the Cross			
Dales in Winter			
Under Fire			
Pearmain Susan	SHIRLEY P.S		
Trees in the Mist			
Price Fred DPAGB BPE4 EFIAP	BEYOND GROUP		
Venise			
Peace			
Ice Maiden			
Those Were the Days			
Price Jim DPAGB EFIAP/b BPE5	BEYOND GROUP		
Collapsing the Scrum			
Crunch Time			
Lake Victoria Bank			
Sellers Jon BPE4 CPAGB AFIAP	WIGAN 10		
The Bank Robbers			
His Lady in Red			
The Awakening			
Sidney Chris	GRANGE P.S		
Sadness			
Line Out			
Sutton Eric	GRANGE P.S		
Biker Reverie			
Timmins Anthony	DUNCHURCH P.S		
No. 14			
Toft Maureen EFIAP/p MPAGB MPSA ABPE	SOUTHAMPTON C.C		
Jumping Tree Frogs			
High Spirits			
Weaver E.J APAGB	STUDLEY C.C		
River Derwent			
White John EFIAP/s BPE5 CPAGB	TETTENHALL	WOOD	P.C
Trawlermans Hut			



1st Place
Large Banded Grasshopper
Anthony Pioli FRPS FBPE
Chapel en le Frith C C

2nd Place
Great Reed Warbler
Graham Hilton LRPS BPE2*
Stockport Photographic Society



3rd Place
Common Cuckoo Flying Amongst Reeds
Richard Nicoll
Cambridge C C



HIGHLY COMMENDED

Evans Roger DPAGB EFIAP ABPE Emerald Damselfly Triplet	DAPA GROUP
Ferrari Gianpiero ARPS DPAGB ABPE Darwin's Heath on Bladder Campion	SILEBY P.S
Hunton Trevor DPAGB AFIAP BPE3 Kingfisher	DROITWICH SPA P.S
Miles Ann FRPS FBPE Pasque Flowers	CAMBRIDGE C.C
Nicoll Richard Great Crested Grebe with Chick	CAMBRIDGE C.C

COMMENDED

Giffin David BPE4 DPAGB Common Garden Spider with Prey	BEYOND GROUP
Pioli Anthony FRPS FBPE Marsh Fritillary Vapourer Moth Egg - Laying	CHAPEL-EN-LE-FRITH C.C
Reeve Kay FRPS DPAGB Spectacular Rust Gill Fungi	SPHINX P.C
Timmins Anthony Leopard in Samburu	DUNCHURCH P.S

ACCEPTED

Adamson David BPE1 Red Parasites on Marbled White Butterfly	CHELTENHAM C.C
Beardmore Leslie Red Poll Great Spotted Woodpecker Male Bullfinch	TAMWORTH P.C
Carter Pamela BPE4 AFIAP Mating Damselies Common Blue	DEEPINGS C.C
Custodio Joe Medusozoa / Jellyfish	YARDLEY P.S
Cutting Liz ARPS DPAGB BPE4 Male Hawfinch in Snow-Storm	BEYOND GROUP
Devine Bob ARPS DPAGB BPE5 EFIAP/b EPSA Leopard Cleans Cub	ASHFORD P.S
Dickens Roger Fieldfare	SOUTH BIRMINGHAM P.S
Edwards Mike ARPS BPE5 Pancratium Maritum and Seeds	SMETHWICK P.S
Fackrell Alan Muntacs Mating	SMETHWICK P.S
Ferrari Gianpiero ARPS DPAGB ABPE High Brown Fritillary on Betony Chequered Skipper in Early Morning Dew	SILEBY P.S
Giffin David BPE4 DPAGB Cockchafer on Scabious	BEYOND GROUP
Hilton Graham LRPS BPE2 Kingfisher with Minnow	STOCKPORT P.S
Mallett Christine BPE2 Grey Heron with Catfish	SHIRLEY P.S
May John White Tree Frog	YARDLEY P.S

McKay Dave ARPS DPAGB BPE4 Mating Common Blue Damselflies 3 Snowy Egret with Fish	OXFORD P.S
Miles Ann FRPS FBPE Mating Hares	CAMBRIDGE C.C
Moore Adrian Shaggy Parasols in Habitat Green Shield Bug Nymph	TAMWORTH P.C
Moore John Unknown Butterfly-Vietnam	SMETHWICK P.S
Nicoll Richard Little Egret Eating Prawn	CAMBRIDGE C.C
Pearmain Susan Impala with Young	SHIRLEY P.S
Pioli Anthony FRPS FBPE Nemopterid	CHAPEL-EN-LE-FRITH C.C
Prior Dick ARPS BPE4 AFIAP Parent Bug 1st Instar	STRATFORD PHOTO GROUP
Ruske Paddy Buff Ermine Moth	RUGELEY & ARMITAGE C.C
Toft Maureen EFIAP/p MPAGB MPSA ABPE Confrontation Leopard Feeding	SOUTHAMPTON C.C
Windle Michael ARPS Dropping the Fish	COTSWOLD MONOCHROME
Withall Tim EFIAP DPAGB BPE4 Black Tailed Skimmer *	SOUTHAMPTON C.C

General Projected Digital



1st Place
The Waterhole
Baden Bowen BPE3* AFIAP CPAGB
Independent

2nd Place
Nereid
Valerie Duncan ARPS DPAGB
AFIAP EPSA BPE4*
Bristol P S



3rd Place
The Mineworkers
Jon Sellers BPE4* CPAGB AFIAP
Wigan 10



HIGHLY COMMENDED

Allen K In His Prime	WIGAN 10
Coles Gerry DPAGB ARPS BPE4 Free as a Bird	DUSTON C.C
Given Bob DPAGB BPE3 Asalah	CATCHLIGHT C.C
Jenkins Gareth ARPS DPAGB BPE2 AFIAP Jack	ERYRI N.W.P.A
Martin Jon EFIAP/s ABPE Snowy Tree Grove	BRECKLAND IMAGING GROUP

COMMENDED

Duncan Valerie ARPS DPAGB BPE4 AFIAP EPSA Jimmy	BRISTOL P.S
Jenkins Gareth ARPS DPAGB BPE2 AFIAP Speed and Power	ERYRI N.W.P.A
McKelvey Ross EFIAP MPAGB FIPF Ruby in the Subway	CATCHLIGHT C.C
Minns Justin LRPS BPE1 Sweeping	FELIXSTOWE P.S
Robinson Geoff ARPS DPAGB BPE5 EFIAP Lakeside Mist	NORTH CHESHIRE P.S

ACCEPTED

Ainscow Ken CPAGB BPE4 A Bit on an Atmosphere At the Halt	LYTHAM ST. ANNES P.S
Allen K Out of Reach Rebirth of an Angel Dawn of the Wicked	WIGAN 10
Baker Brian EFIAP Cornered	CANTERBURY PHOTOGRAPHIC
Bartlett Peter LRPS EFIAP BPE2 CPAGB Collision Course	HOLMFIRTH C.C
Barton Janice Magic Ball Man	WARRINGTON P.S
Beardmore Leslie Water Jump Free Style	TAMWORTH P.C
Bell John LRPS The Boxer On the Final Lap Strokkur Iceland	MOLD C.C
Bowen Baden BPE3 AFIAP CPAGB Birds of a Feather Chemical Warfare The Warrior	INDEPENDENT
Bowen Dave MPAGB ABFE EFIAP Focused Sand Racer	TAMWORTH P.C
Bowen Kim MPAGB EFIAP BPE4 Event Hurdler Langorse Lake Riding the Surf	TAMWORTH P.C
Bramham Gordon MPAGB BPE4 EFIAP/g Pelican Morning	UPMINSTER C.C

Broome-Smith Jeremy BPE1 They Can't See Me for Dust View From the Artists Studio	KPCA KENT
Brown Kean ARPS BPE3 It's Over The Witch	POULTON LE FYLDE P.S
Bunch Ken BPE1 CPAGB Coming a Cropper	DEEPINGS C.C
Cable Nick F16 Fighting Falcon The Great Escape	F8 IMAGE GROUP
Campion Peter DPAGB AFIAP BPE3 Waiting for the Class Man's Best Friend The Stairway	COTSWOLD MONOCHROME
Carter Pamela BPE4 AFIAP Dusty Race Sand Racing	DEEPINGS C.C
Chambers Mark LRPS ARPS CPAGB Feel the Burn Two Sides to Every Story Pelican	REDDITCH P.S
Cherry Richard ARPS DPAGB BPE4 EFIAP Greyhounds	CHELTENHAM C.C
Clarke Ian LRPS CPAGB White Tree Frog on Stump A Futile Repair Old Gold	GOSPORT C.C
Clarke Neil ARPS BPE2 The Freedom of the Mountains	CAMBRIDGE C.C
Close Colin LRPS AFIAP BPE3 Fortune Teller Ciaran Retirement	BROMSGROVE P.S
Coles Gerry DPAGB ARPS BPE4 On Golden Pond Singing in the Rain Happy Days	DUSTON C.C
Couper Christine ARPS AFIAP BPE2 EFIAP Luskentyre Tide #1	INDEPENDENT
Crashley John BPE3 DPAGB EFIAP Great White Egret and Friend	CHORLEY P.S
Davies Janet Anvil Liquid Heat Sheep in the Pen	MOLD C.C
Devine Bob ARPS DPAGB BPE5 EFIAP/b EPSA Who's Watching Who ? Mormon Row Rainbow	ASHFORD P.S
Dicks Judi LRPS BPE3 Pensive Girl in Red	STAFFORD PS

ORMSKIRK & CHORLEY C.C Time

Donnelly Terry MPAGB ARPS AFIAP	
Vortex	
Waiting for a Prayer	
The Look of Intent	
Why so Serious ?	
Dowdall Brian DPAGB AFIAP BPE2	TRINITY PHOTO GROUP
Dungeness	
Old Lady of Saigon	
Duncan Valerie ARPS AFIAP EPSA DPAGB BPE4	BRISTOL P.S
The Fish Dive	
The Late Bus	
Edwards Mike ARPS BPE5	SMETHWICK P.S
Evening Walk-Praia do Castelejo	
Heading for the Flames	
Elgin Keith LRPS CPAGB BPE2 LIPF	CATCHLIGHT C.C
Flying High	
A Firm Grip	
Power	
Evans Roger DPAGB EFIAP ABPE	DAPA GROUP
Anabelle Kouacs Ball Routine	
A Splash of Red	
Eden Edwards Tumble	
Sand Splash	
Fackrell Alan	SMETHWICK P.S
Water Wipeout Thumbs Up	
NataliaFryer Andy DPAGB EFIAP BPE4	SMETHWICK P.S
Kimmeridge Ledge	
Gibbins David ARPS APAGB BPE4 EFIAP	BEESTON C.C
Silent Vigil	
Beach People	
Gibson David DPAGB	STAFFORD PS
Frosty Rails at Bridge 36	
Shadows	
Given Anne CPAGB LRPS BPE2 LIPF	CATCHLIGHT C.C
Joey	
Given Bob DPAGB BPE3	CATCHLIGHT C.C
Abigail	
Clash of Amazons	
With Menace	
Griffiths Janet CPAGB BPE2	TETTENHALL WOOD P.C
Innocence	
Tom	
Gutteridge Andy AFIAP BPE3	PETERBOROUGH P.S
By the Window	
In Trouble	
Neck & Neck	
Hadley Phil CPAGB BPE1	GATEWAY C.C
Big Ben and the Houses of Parliament	
Harding John LRPS BPE3 EFIAP	STRATFORD PHOTO GROUP In
Rememberence	
Curious Rat	
Hill Jim BPE1	CARLUKE C.C
Horse Guard	
Hilton Graham LRPS BPE2	STOCKPORT P.S
Rider on the Hill	
Hilton Nick EFIAP BPE4 DPAGB	SOUTHPORT P.S
The Pose	
Outcast	

Hodgkiss Graham ARPS MPAGB AFIAP APAGB Anna	ASTON & ERDINGTON P.S
Holt John ARPS DPAGB BPE4 A Late Harvest Gert and Daisy	SMETHWICK P.S
Holyland Simon CPAGB BPE1 Bryce Canyon Rugby's a Dirty Game Yes, Your Bum Does Look Big in That	BURTON-ON-TRENT P.S
Hunton Trevor DPAGB AFIAP BPE3 First Light Malvern	DROITWICH SPA P.S
Imi Roland LRPS Tranquility Keeping Guard Waiting	INDEPENDENT
Janaszek Alan Goal Celebration	WORKSOP & DISTRICT P.S
Jayes Dinah ARPS MPAGB EFIAP Caged Waiting at the Old Cross Effortless Beauty	SMETHWICK P.S
Jenkins Gareth ARPS DPAGB BPE2 AFIAP Clockwork Mind Waiting for the Last Train	ERYRI N.W.P.A
Jones Graham EFIAP/p DPAGB BPE5 Collision Race 4 Monmore Green Going for Broke	HARPENDEN P.S
Kaye Glyn Misty Light Treeline	WORKSOP & DISTRICT P.S
Keel David EFIAP/s CPAGB BPE4 Liam Phillips BMX Word Champion Vanessa Low in Flight	WYTHALL P.S
Kent Geraldine The Old Laundry	WYTHALL P.S
Kent Keith CPAGB BPE2 Waiting to Leave On the Turn	INDEPENDENT
Kershaw David ARPS CPAGB EEEE Some Folks Gathering Storm Theres Always One	WAKEFIELD C.C
Law Reg LRPS DPAGB BPE4 High Flyer	DUSTON C.C
Laws Jim LRPS CPAGB BPE3 A Quiet Read	NORFOLK P.G
Leyser Cheryl Cloud & Mountain	SMETHWICK P.S
Long Keith ARPS PSA3 City Gentleman	BANBURY C.C
Manning Hazel ARPS BPE3 DPAGB Valerie Teresa	LEICESTER FOREST P.S
Marsh Rodney CPAGB AFIAP BPE3 Almost Totally Alone Crunching Tackle Just Missed	ILKLEY C.C
Martin Jon EFIAP/s ABPE Beach Pattern Haukland Snowy Tree	BRECKLAND IMAGING GROUP

McKelvey Ross EFIAP MPAGB FIPF Rain Jump Fredau in Blue	CATCHLIGHT C.C
Millin Robert EFIAP/B EPSA DPAGB Our Home Picton Reading Room Liverpool Dance with Me	WIGAN 10
Moore Adrian Garlic Silhouette	TAMWORTH P.C
Morrow Matt Early Morning Descent He Ain't Heavy, He's My Brother	MOLD C.C
Murray Eileen DPAGB BPE3 Dragon Freedom Journey's End Incognito	WORKSOP & DISTRICT P.S Enter the
O'Connell Sue ARPS EFIAP DPAGB BSE Lake Tableau	BRISTOL P.S
Oliver Anthony LRPS CPAGB Cathedral Dawn	SALISBURY C.C
Ollis Maria Kofi	SMETHWICK P.S
Parry Barbara Psychedelic Experience	KNOWLE C.C
Parry Judith DPAGB Hon PAGBAFIAP The Scarfe Celestial Light Looking at my Hidden Self	SMETHWICK P.S
Parry Roger ARPS Hon PAGB DPAGB EFIAP Dance My Boys Window Light	SMETHWICK P.S
Polakowski Andy BPE1 Leading Lady Pregnant Woman , Nepal Travelling Hopefully Himalayan Bathroom	MOLD C.C
Preston Bill ARPS DPAGB BPE3 Inside the Cube Lighthouse Storm Socks and Gloves	ELLESMERE PORT P.S
Price Fred DPAGB BPE4 EFIAP One Eye on the Ball	BEYOND GROUP
rice Jim DPAGB EFIAP/b BPE5 Riley Leads Over the Final Hurdle Typical English Summer	BEYOND GROUP
Proctor Steve CPAGB A Quiet Moment On Key The Eyes Have it	RIBBLESDALE C.C
Ranger Alan EFIAP LRPS BPE4 AFIAP Atlantic Ruins Heartland Bahhhhh Atlantic Force	DAPA GROUP
Ranieri Malcolm FRPS MPAGB BPE5 AFIAP Modern Girl	STRATFORD PHOTO GROUP

PRapier Marion ARPS CPAGB BPE1 Mud Bath At the Glacier	EDMONTON C.C
Rawson Alison DPAGB ARPS BPE3 EFIAP A Little Bit of Madness Laurel & Hardy	CAMBRIDGE C.C
Redshaw Karl BPE1 ARPS CrCPP Brothers	BEDWORTH EXHALL C.C
Richardson Keith BPE1 The Inquisition The Witching Hour Vertigo	ATHERTON & DISTRICT P.S
Robinson Geoff ARPS DPAGB BPE5 EFIAP Confrontation Duplicity Penmon Cottages	NORTH CHESHIRE P.S
Roper Ed EFIAP Full Power Squash Duel The Agony of the Race	WIGAN 10
Rowley Jason BPE1 Mist, Shadows and Hope Dawn Flight	ALSAGER C.C
Sallett Sally LRPS CPAGB Bleeding Heart Gold Medal for Mr Lockyer One Man & His Dog	WAKEFIELD C.C
Sellers Jon BPE4 CPAGB AFIAP The Chimney Sweep The Mason Evacuee Brothers	WIGAN 10
Smith Geoff ARPS DPAGB EFIAP Dog Walkers	POULTON LE FYLDE P.S
Stone Marie-Laure BPE4 DPAGB EFIAP/b Merlin Plucking Dunnock	FOLKESTONE C.C
Tarbox Jim BPE3 LRPS CPAGB MPSA Jetski Freestyle Rider Jetski Stunt	INDEPENDENT
Toft Maureen EFIAP/p MPAGB MPSA ABPE Young Mother Woodland Walk Abandoned	SOUTHAMPTON C.C
Tomkinson Andrew Cheeky Child Out of Your Dreams	BLYTHE BRIDGE C.C
Walton Graham DPAGB The Standoff The Engineman	ARDEN P.G
Wentworth Harry BPE4 EFIAP Devotion Boris's Bikes	DAPA GROUP
Wilkinson Hugh LRPS CPAGB BPE2 LIPF Determination Fredau Roarie	NIPA
Woods Trevor EFIAP APAGB Cry for Freedom 634	BISHOP AUCKLAND P.S



1st Place
Dalmatian Pelicans Fishing
Margaret Tabner DPAGB
Tettenhall Wood P C

2nd Place
Mother Love ,Baby Macaque ,Indonesia
Sue O'Connell ARPS EFIAP DPAGB BSE
Bristol P S



3rd Place
Two Apollos
Chris Ellison ARPS
Leyland Photographic Society



HIGHLY COMMENDED

Cable Nick	F8 IMAGE GROUP
Eagle Owl Landing	
Hilton Graham LRPS BPE4	STOCKPORT P.S
Common Frogs	
Jones Graham EFIAP/p DPAGB BPE5	HARPENDEN P.S
Gentoo Losing Balance in Sandstorm	
Rice Veronica DPAGB BPE3 AFIAP	CHELMSFORD C.C
Crowned Cranes Displaying	
Whiston Ian CPAGB BPE3 AFIAP	CREWE P.S
Cheetah with Tommie Lamb	

COMMENDED

Beardmore Leslie	TAMWORTH P.C
White Throat with Lunch	
Dennis John BPE2	WILMSLOW GUILD P.S
Zebra Stripes	
Hadley Phil CPAGB BPE1	GATEWAY C.C
Yellow Dung Fly	
Stone Marie-Laure BPE4 DPAGB EFIAP/b	FOLKESTONE C.C
Cubs Suckling in the Willows	
Whiston Ian CPAGB BPE3 AFIAP	CREWE P.S
Lioness with Wart Hog	

ACCEPTED

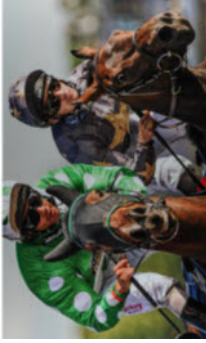
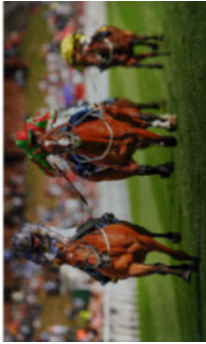
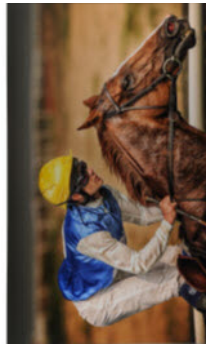
Ainscow Ken CPAGB BPE4	LYTHAM ST. ANNES P.S
Australian Darter	
Harvest Mouse 1	
Harvest Mouse 2	
Akerstrom Charles LRPS CPAGB BPE2	SYDENHAM C.C
Starlings	
Beardmore Leslie	TAMWORTH P.C
Singing Wren	
Bell John LRPS	MOLD C.C
American Bush Dog	
Bell Linda LRPS	MOLD C.C
Bee Coming into Land	
Bowen Dave MPAGB ABFE EFIAP	TAMWORTH P.C
Great Crested Grebe	
Cinnabar Larva	
Striped Shield Bug on Elephant Garlic *	
Female Rock Ptarmigan	
Bowen Kim MPAGB EFIAP BPE4	TAMWORTH P.C
Arctic Tern in Sleet Storm	
Brown Bear Relaxing	
Bramham Gordon MPAGB BPE4 EFIAP/g	UPMINSTER C.C
Great Cormorant	
Broome-Smith Jeremy BPE1	KPCA KENT
Catch of the Day	
Bunch Ken BPE1 CPAGB	DEEPINGS C.C
Gannets Pair Bonding	
Chambers Mark LRPS ARPS CPAGB	REDDITCH P.S
Grey Seal Pup	
Crashley John BPE3 DPAGB EFIAP	CHORLEY P.S
Hoverfly	

Cutting Liz ARPS DPAGB BPE4 Marbled White on Scabious Wheatear	BEYOND GROUP
Dennis John BPE2 African Spoonbills Green Lacewing	WILMSLOW GUILD P.S
Duncan Valerie ARPS DPAGB BPE4 AFIAP EPSA Bobcat Looking Back Grizzly in the Woods Bobcat on the Run	BRISTOL P.S
Ellison Chris ARPS Shield Bugs	LEYLAND P.S
Fackrell Alan Grey Langur	SMETHWICK P.S
Ferrari Gianpiero ARPS DPAGB ABPE Indian Pond Heron Catching Flies Black Hairstreak	SILEBY P.S
Given Bob DPAGB BPE3 North American Bison	CATCHLIGHT C.C
Gutteridge Andy EFIAP BPE3 Reed Warbler with Catch Blue Tit with Catch Say it with Flowers	PETERBOROUGH P.S
Hadley Phil CPAGB BPE1 Small Skipper	GATEWAY C.C
Hilton Graham LRPS BPE2 Red Backed Shrike	STOCKPORT P.S
Hoffman Jeffrey Crested Tit Gull Attack	DERBY CITY P.C
Holyland Simon CPAGB BPE1 Female Common Kingfisher	BURTON-ON-TRENT P.S
Hunton Trevor DPAGB EFIAP BPE3 Kestrel Hunting Avocet Landing Mountain Hare	DROITWICH SPA P.S
Jones Graham EFIAP/p DPAGB BPE5 Gentoo Retreat from Sandstorm Gentoo Return from Stormy Sea	HARPENDEN P.S
Kirkby Mary Panther Chameleon , Madagascar	STRATFORD PHOTO GROUP
Marsh Rodney CPAGB EFIAP BPE3 Tarsier Monkey	ILKLEY C.C
Martin Jon EFIAP/s ABPE Cheetah Finishing Off Prey Elephant Herd at Dusk	BRECKLAND IMAGING GROUP
McGowan Frank DPAGB Mountain Goats on Ridge Mountain Goats in Winter Coat	SMETHWICK P.S
Millin Robert EFIAP/b EPSA DPAGB Red Eyed Green Tree Frog Leopard Gecko	WIGAN 10
Moore Adrian Amethyst Deciever	TAMWORTH P.C
Muddiman Mike BPE4 Adult Wild Little Owl	INDEPENDENT
Murray Eileen DPAGB BPE3 Last of the Migration Bonding	WORKSOP & DISTRICT P.S

Parry Barbara	KNOWLE C.C
Eastern Lubber Grasshopper	
Proctor Steve CPAGB	RIBBLESDALE C.C
Peregrine Falcon	
Ranger Alan EFIAP LRPS BPE4	DAPA GROUP
Spiral Wrack	
Rice Veronica DPAGB BPE3 AFIAP	CHELMSFORD C.C
Startled Banded Mongoose	
Rowe Mike ARPS BPE3	NATURAL WORLD P.S
Wilson's Plover Courtship	
Bickering White Ibis	
Sandwich Tern Harassed by Gull	
Smith Geoff ARPS DPAGB EFIAP	POULTON LE FYLDE P.S
Red Deer in Snowfall	
Red Footed Falcons Mating	
Stone Marie-Laure BPE4 DPAGB EFIAP/b	FOLKESTONE C.C
Surprise Attack	
Tabner Margaret DPAGB	TETTENHALL WOOD P.C
Stella Eagles The Chase is On	
Tarbox Jim BPE3 LRPS CPAGBEFIAP MPSA	INDEPENDENT
Porcelain Fungi Trio	
Tunstall Bob DPABG BPE3	WORCESTERSHIRE C.C
Female Kestrel Take Off	
Walton Chanardaye	ARDEN P.G
Nuthatch with Acorn	
Walton Graham DPAGB	ARDEN P.G
Yellow Hammer	
Whiston Ian CPAGB BPE3 AFIAP	CREWE P.S
Hyena and Cub	
Juvenile Lion in Training Hunt	
Whitfield-King Charles DPAGB BPE4	IPSWICH & DISTRICT P.S
Sedge Warbler with Demoiselle	
Wilkinson Hugh LRPS CPAGB BPE2 LIPF	NIPA
Fox Cub	
Nesting Gannets	
Woods Trevor EFIAP APAGB	BISHOP AUCKLAND P.S
Dipper 627	
Red Squirrel 341	
Wythall Tim EFIAP DPAGB BPE4	SOUTHAMPTON C.C
Broad Bodied Chaser on Iris	
Incoming! Long-Tailed Tits	



1st Place Village Life
 Maureen Toft EFIAP/p MPAGB MPSA ABPE Southampton C C



2nd Place At the Races
 Terry Donnelly MPAGB ARPS AFIAP Ormskirk and Chorley

Panel of 4 Prints



3rd Place
Rabbit Life
Terry Donnelly MPAGB ARPS AFIAP
Ormskirk and Chorley

HIGHLY COMMENDED

Donnelly Terry MPAGB ARPS AFIAP Underground	ORMSKIRK & CHORLEY C.C
Harding John LRPS BPE3 AFIAP Boats at Sunset	STRATFORD PHOTO GROUP
Jenkins Gareth ARPS DPAGB BPE2 AFIAP A Grand Day Out Antarctic Wildlife	ERYRI N.W.P.A
Toft Mauureen EFIAP/b MPAGB MPSA ABPE Deraliction	SOUTHAMPTON C.C

COMMENDED

Devine Bob ARPS DPAGB BPE5 EPSA EFIAP/b Lions	ASHFORD P.S
Jenkins Gareth ARPS DPAGB BPE2 AFIAP Rock & Ice	ERYRI N.W.P.A
Lenton Sue Woolacoombe Beach	WYTHALL P.S

ACCEPTED

Alexander Ove "Red" Wildlife Species in the UK	STOCKPORT P.S
Duckett Ralph MPAGB APAGB BPE3 EFIAP Winter's Journey	BURTON-ON-TRENT P.S
Harding John LRPS BPE3 AFIAP Dynasty Show	STRATFORD PHOTO GROUP
Keel David EFIAP/s CPAGB BPE4 Twenty 20 Cricket	WYTHALL P.S
McKay Dave ARPS DPAGB BPE4 Harvest Mice	OXFORD P.S
Pioli Anthony FRPS FBPE Seals in Sandstorm	CHAPEL-EN-LE-FRITH C.C
Prior Dick ARPS BPE4 AFIAP Leading the Line Haunted	STRATFORD PHOTO GROUP
Rawson Alison DPAGB ARPS BPE3 EFIAP Decay	CAMBRIDGE C.C

BRITISH PHOTOGRAPHIC EXHIBITIONS CROWN AWARDS AND DISTINCTIONS

Acceptances in this exhibition count towards the above awards

Exhibitors are invited to aggregate their acceptances in the affiliated exhibitions and upon reaching the accepted aggregate to apply, without charge, for a crown award rating. Those achieving the five crown award become eligible to aggregate further acceptances and awards to gain the Associateship and Fellowship distinctions of British Photographic Exhibitions.

A copy of the regulations for BPE Crown Awards
may be obtained from (SAE please):

Alison DPAGB EFIAP/b BPE3* & Andy Fryer DPAGB EFIAP BPE4*

BPE Crown Awards Officers

38 Oldacre Lane, Brocton, Stafford, ST17 0TW

The current member exhibitions of the BPE are as follows:

Basingstoke Camera Club Exhibition [DP (6)]
Bebington Salon of Photography [DP (5)]
Beyond Group Open Exhibition [P (3), DP (3)]
Clay Cross National Projected Image Exhibition [DP (5)]
Cotswold Salon (Monochrome) [P (6)]
Dingwall National Projected Image Exhibition [DP (4)]
Frome Wessex Salon of Photography [DP (5)]
GDPU Digital Exhibition [DP (4)]
Great Barr Open Exhibition [P (4), DP (4)]
Great Barr PS Panels Exhibition [P (4), DP (4)]
Guernsey Salon of Photography [DP (4)]
Neath & Dist. P.S. Salon [DP (4)]
Robin Hood Open Digital Exhibition [DP (6)]
Rushden Open Photographic Exhibition [DP (4)]
Shrewsbury Open Photography Exhibition [DP (4)]
Solihull Open Exhibition of British Photography [DP (4), P (3)]
South Birmingham Open Digital Exhibition [DP (4)]
Southport National Exhibition of Photography [P (3), DP (3)]
SRGB-Print Celebration [P (5)]
Vale of Evesham National Photographic Exhibition [DP (4)]
Yardley Photographic Society Exhibition [P (4), DP (2)]

Key: P = prints, DP = digital projection

Numbers () indicate number of sections. See entry forms for section details.

See BPE website for details www.britishphotographicexhibitions.org.uk

Amended 08.09.2014 Frome Sections, Clay Cross Sections

Amended 24.09.2014 Solihull Sections

Amended 29.09.2014 Alba & South Birmingham added, Robin Hood Sections

Amended 30.09.2014 Alba removed as first BPE exhibition not until 2016

YARDLEY PHOTOGRAPHIC SOCIETY

NOVEMBER 2014

- 11 Alex and Christian from Ink Express on producing
- 18 Second Quarterly Competition . Judge Dave Tucker DPAGB CPAGB BPE3*
- 25 Interclub at Home with Grange Photographic Society . Judge Anne Sutcliffe FRPS EFIAP PPSA

DECEMBER 2014

- 02 Three of a Kind Competition: Prints and DPI Judge: Peter Clark FRPS EFIAP/p APSA MPSA
- 09 James Beddoes and Hannah Brooks “Lighting and Posing the Human Form **Members Only**
- 16 Christmas Members and Friends Social Night
- 23 Closed
- 30 Closed Happy New Year

JANUARY 2015

- 06 PAGB Digitally Projected Image Championship: Travelling exhibition
- 13 An Evening with Paul Holt (YPS)
- 20 Robert Jones LRPS A practical evening with Robert . Bring your cameras
- 27 Len Hiatt Trophies : Prints and PDI Judge Robert Jones

FEBRUARY 2015

- 03 MCPF Portfolio: Print and DPI Travelling Exhibition.
- 10 Brian and Kevin (Flash Centre) with Hannah Brooks “ 2 guys & a gal “ . Bring your camera . MEMBERS ONLY !
- 17 two competitions - Geof Hinde Rose Bowl (PDI) and Colin Forsyth Trophy (AV) .Judge Richard Brown
- 24 John Holt ARPS DPAGB BPE4* AV presentation on Travel , Landscapes , Drama&Sport

MARCH 2015

- 03 Auction Night . Brigg in unwanted bits and pieces .
- 06 3 way interclub away at South Birmingham P S with Yardley P S and Fentham P S . Judge John Bissel
- 10 John Haines “Photography My Way “
- 11 Inter Club away at Wythall P S Judge Louise Hill LRPS DPAGB MPAGB
- 17 17 3rd Quarterly Competition Prints and PDI Judge Peter Young CPAGB AFIAP APAGB
- 24 Inter Club at Home with Great Barr P S Judge Tony Broom CPAGB18
- 31 Tony Winfield Creating a Digital Slide Show

APRIL 2015

- 07 No Meeting Rooms are Available
- 14 Monochrome Competition Print and PDI
- 21 Andrew Gragg FRPS Audio Visuals from the ground up .
- 28 4th Quarterly Competition Prints and PDI Judge Andrew Gragg FRPS

MAY 2015

- 05 No Meeting Rooms are Available
- 12 Presidents Plaque Theme “Impact “
Judge David Boyce
- 18 Away Visit to Aston & Erdington to present some of our images . More information to follow . 19
- Annual General Meeting - All Members

Every care has been taken in the production of this programme the information supplied may be liable to change. The aim of the Society is to promote the enjoyment of photography within a warm and friendly environment. The Society meets once a week on a Tuesday at 7:45pm from the beginning of September through to the end of May. During the summer a more flexible programme takes place, with meetings in the clubrooms and others arranged for outside locations, depending on the wishes of the members.

Printed by Paper & Print Ltd
Email: mathew@psw.co.uk